



Swantje Pietsch (Autor)

Fluidization behavior and liquid injection in three-dimensional prismatic spouted beds



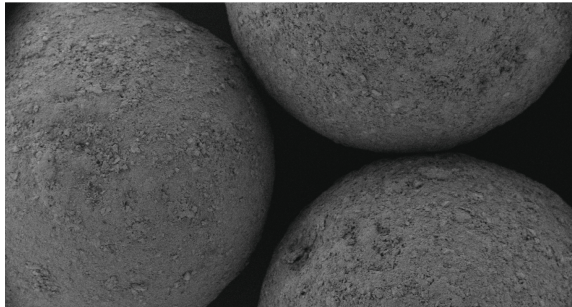
SPE-Schriftenreihe

14

Herausgegeben von Prof. Dr.-Ing. habil. Dr. h.c. Stefan Heinrich

Swantje Pietsch

Fluidization behavior and liquid injection in three-dimensional prismatic spouted beds



Cuvillier Verlag Göttingen
Internationaler wissenschaftlicher Fachverlag

<https://cuvillier.de/de/shop/publications/7962>

Copyright:

Cuvillier Verlag, Inhaberin Annette Jentsch-Cuvillier, Nonnenstieg 8, 37075 Göttingen, Germany

Telefon: +49 (0)551 54724-0, E-Mail: info@cuvillier.de, Website: <https://cuvillier.de>



Contents

| | |
|---|-----------|
| Preface | i |
| Abstract | iii |
| Contents | iii |
| Symbols | vii |
| 1 Introduction | 1 |
| 1.1 Spouted bed technology | 1 |
| 1.1.1 General process description | 1 |
| 1.1.2 Continuous operation | 9 |
| 1.2 Numerical simulations | 13 |
| 1.3 Objective and strategy | 15 |
| 1.4 Outline of the thesis | 16 |
| 2 Experimental methods | 19 |
| 2.1 Introduction | 19 |
| 2.2 Particle characterization | 19 |
| 2.2.1 Particle size and size distribution | 20 |
| 2.2.2 Apparent particle density | 20 |
| 2.2.3 Envelope density | 21 |
| 2.2.4 Restitution coefficient | 22 |
| 2.2.5 Young's modulus | 22 |
| 2.2.6 Friction coefficient | 24 |
| 2.2.7 Minimum fluidization velocity | 25 |
| 2.3 Spouted bed apparatuses | 26 |
| 2.3.1 Laboratory spouted bed | 27 |
| 2.3.2 Laboratory transparent replica | 30 |
| 2.3.3 Pilot scale spouted bed | 30 |
| 2.4 Residence time measurements | 34 |
| 2.4.1 Tracer production | 34 |
| 2.4.2 RTD experiments | 35 |
| 2.4.3 Analysis of the RTD measurements | 35 |
| 2.4.4 Residence time models | 36 |
| 2.5 Analysis of coated particles | 41 |



| | | |
|----------|---|------------|
| 2.5.1 | Optical coherence tomography (OCT) | 41 |
| 2.5.2 | Particle size analysis | 43 |
| 2.5.3 | Theoretical growth model | 44 |
| 2.5.4 | Light microscope | 45 |
| 2.5.5 | X-ray microtomography | 45 |
| 3 | Fundamentals of numerical simulations | 47 |
| 3.1 | Introduction | 47 |
| 3.2 | Particle properties | 48 |
| 3.3 | CFD-DEM coupling procedure | 53 |
| 3.3.1 | Coarse-graining approach | 57 |
| 3.3.2 | Simulation parameters | 59 |
| 3.4 | Liquid injection | 60 |
| 3.5 | Process quantification | 62 |
| 3.5.1 | Fourier transform | 62 |
| 3.5.2 | Circulation frequencies | 63 |
| 3.6 | Recurrence CFD (rCFD) | 64 |
| 3.6.1 | Recurrence analysis | 64 |
| 3.6.2 | Simulations with rCFD | 65 |
| 4 | Digital image analysis | 67 |
| 4.1 | Introduction | 67 |
| 4.2 | Particle tracking velocimetry (PTV) | 67 |
| 4.2.1 | Particle detection | 68 |
| 4.2.2 | Particle tracking | 74 |
| 4.3 | Quantification of coating quality | 79 |
| 5 | Characterization of laboratory spouted bed | 85 |
| 5.1 | Introduction | 85 |
| 5.2 | Experimental determination of spouting stability | 85 |
| 5.2.1 | Experiments with γ -Al ₂ O ₃ particles | 86 |
| 5.2.2 | Experiments with <i>Cellets</i> [®] 500 particles | 91 |
| 5.3 | Simulation conditions | 96 |
| 5.3.1 | Mesh independence | 96 |
| 5.3.2 | Turbulence model | 100 |
| 5.3.3 | Drag model | 100 |
| 5.4 | Validation | 104 |
| 5.5 | Insertion of draft plates | 105 |
| 5.6 | Binary system | 110 |
| 6 | Coating process | 111 |
| 6.1 | Introduction | 111 |
| 6.2 | Numerical investigations | 111 |
| 6.2.1 | Droplet injection | 112 |
| 6.2.2 | Circulation frequencies | 114 |
| 6.2.3 | Spray coating analysis with rCFD | 117 |
| 6.3 | Experimental analysis of coating quality | 120 |
| 6.3.1 | Digital image analysis | 121 |



| | | |
|----------|--|------------|
| 6.4 | Experimental analysis of coating quantity | 128 |
| 6.4.1 | Optical coherence tomography | 129 |
| 6.4.2 | Theoretical growth model | 131 |
| 6.4.3 | Light microscope | 132 |
| 6.4.4 | X-ray microtomography | 133 |
| 6.4.5 | Particle size analysis | 134 |
| 7 | Continuous process in pilot scale spouted bed | 137 |
| 7.1 | Introduction | 137 |
| 7.2 | Tracer characterization | 137 |
| 7.3 | Residence time measurements | 141 |
| 7.4 | Back-mixing: qualitative description | 148 |
| 7.5 | Back-mixing: quantitative description | 149 |
| 7.6 | Conclusions | 153 |
| 8 | Conclusions | 155 |
| A | Specifications of used equipment | 157 |
| A.1 | Components of laboratory <i>ProCell</i> [®] 5 | 157 |
| A.2 | Components of transparent replica | 157 |
| A.3 | Components of pilot scale <i>ProCell</i> [®] 25 | 158 |
| B | Behavior of the empty transparent replica | 159 |
| C | Liquid injection in CFD-DEM simulations | 161 |
| D | Algorithms used for PTV | 163 |
| | Bibliography | 165 |
| | Curriculum vitae | 177 |