



Miika Franck (Autor)

Fast Pyrolysis of Technical Lignins in a Circulating Fluidized Bed Reactor



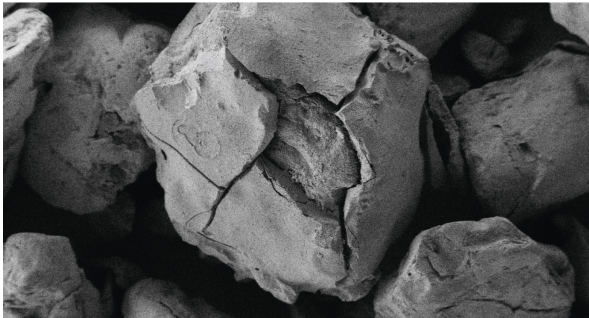
SPE-Schriftenreihe

12

Herausgegeben von Prof. Dr.-Ing. habil. Dr. h.c. Stefan Heinrich

Miika Franck

Fast Pyrolysis of Technical Lignins in a Circulating Fluidized Bed Reactor



Cuvillier Verlag Göttingen
Internationaler wissenschaftlicher Fachverlag

<https://cuvillier.de/de/shop/publications/7978>

Copyright:

Cuvillier Verlag, Inhaberin Annette Jentsch-Cuvillier, Nonnenstieg 8, 37075 Göttingen,
Germany

Telefon: +49 (0)551 54724-0, E-Mail: info@cuvillier.de, Website: <https://cuvillier.de>



Contents

1	Introduction	1
2	State of art	3
2.1	Lignocellulosic biomass	3
2.1.1	Cellulose and hemicellulose	4
2.1.2	Lignin	5
2.2	Biomass pyrolysis	7
2.2.1	Pyrolysis in circulating fluidized bed reactors	8
2.2.2	Lignin pyrolysis	9
2.2.3	Influence parameters	10
2.2.4	Product yields, spectrum, properties, and applications	14
2.3	Process modeling	17
2.3.1	Reaction pathway and kinetics	17
2.3.2	Pyrolysis process modeling	19
2.3.3	Flowsheet modeling of pyrolysis refineries	20
3	Scope of work	21
4	Experimental	23
4.1	Pyrolysis plant	23
4.1.1	Pyrolysis product sampling	28
4.2	Analysis methods for used material and pyrolysis products	30
4.2.1	Sample preparation	30
4.2.2	Analysis methods	31
4.3	Evaluation of experiments	37
4.3.1	Permanent gas yield	37
4.3.2	Pyrolysis oil yield	38
4.3.3	Char yield	40
4.4	Used material	41
4.4.1	Lignin	41
4.4.2	Quartz sand	50
4.5	Pyrolysis experiments	51
5	Modeling of pyrolysis process	52
5.1	Reactor fluid dynamics	53
5.1.1	Dense bottom zone	54
5.1.2	Mass transfer between phases	55
5.1.3	Dilute upper zone and entrainment	56
5.1.4	Solid properties	57
5.1.5	Change of superficial velocity due to heterogeneous reactions	58
5.1.6	Residence times	59
5.2	Reaction model and mass balances	59
5.2.1	Material balances	61
5.3	Literature data used for model validation	65



5.3.1	CFB air-blown pyrolysis of pine wood, CERTH, Greece	65
5.3.2	Bubbling fluidized bed pyrolysis of biomass, Univ. of Waterloo, Canada	67
5.4	Flowsheet modeling of an intg. pyrolysis-combustion process	69
5.4.1	Flowsheet model components	69
5.4.2	Flowsheet model of SPE plant with integrated char combustion . . .	70
5.4.3	Energetic process performance ratios	70
6	Pyrolysis results	72
6.1	Pyrolysis mechanism and particle size distribution	72
6.1.1	Granulation	79
6.2	Influence of pyrolysis parameters	83
6.2.1	Pyrolysis temperature	83
6.2.2	Influence of char holdup	98
7	Simulation results	105
7.1	Sensitivity analyses	105
7.1.1	Discretization	105
7.1.2	Superficial gas velocity (residence time)	106
7.1.3	Composition	107
7.2	Granulation	109
7.3	Yields & conversion	110
7.3.1	Validation of applicability	110
7.3.2	Kinetic improvement for lignin	113
7.4	Energetic eval. of an integrated pyrolysis-combustion process	118
8	Summary and conclusions	120
	Notation	122
	References	150
A	APPENDIX	151
A.1	Figures	151
A.2	Tables	153
A.3	Char combustion reactions	156
A.3.1	Heterogeneous char combustion	156
A.3.2	Homogeneous gas phase reaction	156
A.4	Student projects	157