

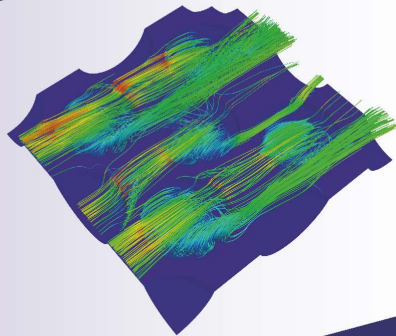


Robert Kasper (Autor)

# **Numerical modeling and simulation of particulate fouling on structured heat transfer surfaces using multiphase Eulerian-Lagrangian LES**

Numerical modeling and simulation  
of particulate fouling on structured  
heat transfer surfaces using  
multiphase Eulerian-Lagrangian LES

Robert Kasper



Cuvillier Verlag Göttingen  
Internationaler wissenschaftlicher Fachverlag

<https://cuvillier.de/de/shop/publications/8442>

Copyright:

Cuvillier Verlag, Inhaberin Annette Jentsch-Cuvillier, Nonnenstieg 8, 37075 Göttingen,  
Germany

Telefon: +49 (0)551 54724-0, E-Mail: [info@cuvillier.de](mailto:info@cuvillier.de), Website: <https://cuvillier.de>

# Contents

<b>Abstract</b>	<b>V</b>
<b>Preface</b>	<b>VII</b>
<b>List of Figures</b>	<b>XIII</b>
<b>List of Tables</b>	<b>XIX</b>
<b>Nomenclature</b>	<b>XXI</b>
<b>1 Introduction</b>	<b>1</b>
1.1 Motivation . . . . .	1
1.2 Fouling of heat transfer surfaces . . . . .	3
1.2.1 Fouling resistance and fouling curves . . . . .	5
1.2.2 Modeling of particulate fouling . . . . .	6
1.3 Objectives and thesis outline . . . . .	8
<b>2 Description of the continuous phase</b>	<b>9</b>
2.1 Governing equations of fluid motion . . . . .	9
2.1.1 Continuity equation . . . . .	9
2.1.2 Momentum equation . . . . .	10
2.1.3 Energy equation . . . . .	11
2.2 Turbulence in wall-bounded flows . . . . .	12
2.3 Mathematical modeling of turbulent flows . . . . .	17
2.4 Large-eddy simulation . . . . .	19
2.4.1 Spatial filtering . . . . .	19
2.4.2 Filtered transport equations . . . . .	21
2.4.3 Subgrid-scale modeling . . . . .	22
<b>3 Description of the dispersed phase</b>	<b>27</b>
3.1 Characterization of dispersed multiphase flows . . . . .	27
3.2 Numerical modeling of dispersed multiphase flows . . . . .	30
3.3 Forces on particles . . . . .	32
3.3.1 Drag force . . . . .	33
3.3.2 Other forces . . . . .	33
3.4 Phase coupling . . . . .	34
3.5 Particle dispersion . . . . .	35

3.6	Particle interactions . . . . .	35
3.6.1	Particle-particle collisions . . . . .	36
3.6.2	Particle-wall interaction . . . . .	38
<b>4</b>	<b>Numerical methodology</b>	<b>39</b>
4.1	Spatial discretization . . . . .	40
4.2	Temporal discretization . . . . .	45
4.3	Pressure-velocity coupling . . . . .	46
4.4	Boundary conditions . . . . .	48
4.5	Numerical procedure of the applied Lagrangian particle tracking . . . . .	49
<b>5</b>	<b>Modeling of particulate fouling on structured heat transfer surfaces</b>	<b>51</b>
5.1	Eulerian-Lagrangian approach . . . . .	51
5.1.1	Formation of fouling deposits . . . . .	52
5.1.2	Removal and resuspension of fouling deposits . . . . .	55
5.2	Multiscale modeling for the simulation of long-term fouling intervals . . . . .	57
5.2.1	Capturing of the macroscale and microscale fouling behavior . . . . .	57
5.2.2	Application of the multiscale approach . . . . .	59
<b>6</b>	<b>Validation</b>	<b>61</b>
6.1	Particle-laden Taylor-Green vortex flow . . . . .	61
6.1.1	Case description and numerical setup . . . . .	61
6.1.2	Influence of the particle response time on particle dynamics . . . . .	62
6.2	Particle-laden turbulent backward-facing step flow . . . . .	63
6.2.1	Case description and numerical setup . . . . .	63
6.2.2	Fluid statistics . . . . .	64
6.2.3	Particle statistics . . . . .	66
6.3	Particle-laden flow in a simplified combustion chamber . . . . .	67
6.3.1	Case description and numerical setup . . . . .	67
6.3.2	Fluid statistics . . . . .	68
6.3.3	Particle statistics . . . . .	70
6.4	Particle-laden turbulent channel flow . . . . .	72
6.4.1	Case description and numerical setup . . . . .	73
6.4.2	Fluid statistics . . . . .	75
6.4.3	Particle statistics and distribution . . . . .	76
6.4.4	Particle deposition . . . . .	79
<b>7</b>	<b>Particulate fouling on dimpled heat transfer surfaces</b>	<b>81</b>
7.1	Particulate fouling on a single spherical dimple . . . . .	81
7.1.1	Case description and numerical setup . . . . .	81
7.1.2	Flow structures . . . . .	83
7.1.3	Thermo-hydraulic performance analysis . . . . .	89
7.1.4	Prediction of particulate fouling . . . . .	93
7.1.5	Experimental confirmation of numerical results . . . . .	99
7.1.6	Summary . . . . .	103

7.2	Particulate fouling on spherical dimples in a staggered arrangement . . . . .	104
7.2.1	Case description and numerical setup . . . . .	104
7.2.2	Thermo-hydraulic performance analysis . . . . .	106
7.2.3	Prediction of particulate fouling . . . . .	109
7.2.4	Summary . . . . .	111
<b>8</b>	<b>Conclusion</b>	<b>113</b>
	<b>Bibliography</b>	<b>115</b>
<b>A</b>	<b>Appendix</b>	<b>129</b>
A.1	High order statistical moments . . . . .	129
A.2	Unladen turbulent channel flow over a single spherical dimple . . . . .	129
A.2.1	Grid independence study . . . . .	130
A.2.2	Influence of the subgrid-scale model . . . . .	131
A.2.3	Influence of the Reynolds number ( $t/D = 0.26$ ) . . . . .	132
A.2.4	Influence of the Reynolds number ( $t/D = 0.35$ ) . . . . .	133
A.2.5	Streamwise velocity distributions $\langle u \rangle / u_b$ . . . . .	134
A.2.6	Vorticity distributions $\langle  \boldsymbol{\omega}  \rangle$ . . . . .	135
A.2.7	Vorticity distributions $\langle \omega_x \rangle$ . . . . .	136
	<b>Statutory declaration in lieu of an oath</b>	<b>137</b>
	<b>List of publications</b>	<b>139</b>