



Moritz Buchholz (Autor)

Towards a multiscale model-based design of spray drying processes



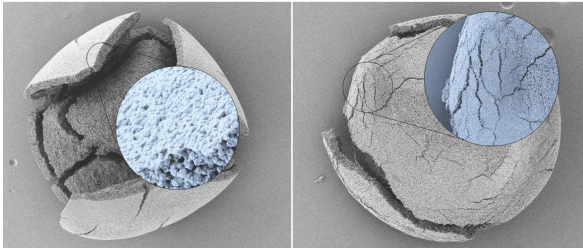
SPE-Schriftenreihe

23

Herausgegeben von Prof. Dr.-Ing. habil. Dr. h.c. Stefan Heinrich

Moritz Buchholz

Towards a multiscale model-based design of spray drying processes



Cuvillier Verlag Göttingen
Internationaler wissenschaftlicher Fachverlag

<https://cuvillier.de/de/shop/publications/8792>

Copyright:

Cuvillier Verlag, Inhaberin Annette Jentsch-Cuvillier, Nonnenstieg 8, 37075 Göttingen, Germany

Telefon: +49 (0)551 54724-0, E-Mail: info@cuvillier.de, Website: <https://cuvillier.de>

Contents

| | |
|---|-------------|
| Symbols | xiii |
| 1 Introduction | 1 |
| 1.1 Motivation | 1 |
| 1.2 Outline | 3 |
| 2 Fundamentals of the spray drying process | 5 |
| 2.1 Atomization | 7 |
| 2.1.1 Droplet formation and collision | 7 |
| 2.1.2 Atomizer types | 9 |
| 2.1.3 Droplet size distribution | 11 |
| 2.2 Droplet drying and particle formation | 12 |
| 2.2.1 Agglomeration and wall deposition | 13 |
| 2.2.2 Morphology | 16 |
| 2.2.3 Stability of suspensions | 19 |
| 2.2.4 Theoretical drying models | 20 |
| 2.2.5 Detailed simulation of the evaporation of single droplets | 22 |
| 2.3 Single droplet drying experiments | 23 |
| 2.3.1 Overview | 23 |
| 2.3.2 Acoustic levitation | 24 |
| 3 Experimental investigations of the spray drying process | 27 |
| 3.1 Material characterization | 27 |
| 3.1.1 Scanning electron microscopy | 28 |
| 3.1.2 Laser diffraction | 29 |
| 3.1.3 Camsizer | 30 |
| 3.1.4 Helium pycnometer | 30 |

| | | |
|----------|--|------------|
| 3.2 | Pilot scale spray dryer experiments | 31 |
| 3.2.1 | Experimental setup and procedure | 31 |
| 3.2.2 | Results | 32 |
| 3.3 | Single droplet drying experiments using acoustic levitation | 35 |
| 3.3.1 | Experimental setup | 36 |
| 3.3.2 | Sound pressure level | 38 |
| 3.3.3 | Data processing | 39 |
| 3.3.4 | First drying stage | 41 |
| 3.3.5 | Second drying stage | 50 |
| 3.3.6 | Transient modeling approach for the evaporation of a single suspension droplet | 55 |
| 3.3.7 | Particle morphology | 63 |
| 3.3.8 | Summary | 67 |
| 4 | Numerical flow simulation of spray dryers | 69 |
| 4.1 | Theoretical background | 69 |
| 4.2 | Data extraction and processing | 71 |
| 4.3 | Validation | 71 |
| 4.3.1 | Model details | 72 |
| 4.3.2 | Results | 74 |
| 4.4 | Summary | 83 |
| 5 | Detailed simulation of a single suspension droplet | 85 |
| 5.1 | Model overview | 86 |
| 5.1.1 | Fluid phase and interface | 87 |
| 5.1.2 | Discrete phase | 92 |
| 5.2 | Numerical analysis | 96 |
| 5.3 | Particle formation | 102 |
| 5.3.1 | Bond parameters | 102 |
| 5.3.2 | Influence of evaporation rate | 107 |
| 5.4 | Summary | 110 |
| 6 | Development of a reduced order spray dryer model | 111 |
| 6.1 | Model structure | 112 |
| 6.2 | Governing equations | 114 |
| 6.2.1 | Gas phase | 115 |
| 6.2.2 | Granule phase | 116 |
| 6.2.3 | Wall | 121 |
| 6.2.4 | Implementation | 124 |
| 6.3 | Numerical Analysis | 126 |
| 6.4 | Validation | 130 |

| | | |
|----------|---|------------|
| 6.5 | Production scale plant | 134 |
| 6.6 | Summary | 141 |
| 7 | Conclusions | 143 |
| | Bibliography | 147 |
| A | Experimental investigation | 153 |
| A.1 | Measurement data | 153 |
| A.2 | Morphology | 155 |
| B | CFD simulation | 159 |
| C | Coupled CFD-DEM simulation | 161 |
| C.1 | Numerical analysis | 161 |
| C.2 | Particle formation | 162 |
| C.3 | Influence of evaporation rate | 167 |
| D | Reduced order model | 169 |
| D.1 | Numerical analysis | 169 |
| D.2 | Production scale spray dryer | 170 |